

The Pulse Newsletter

May 2026

Community Outreach



On Saturday, April 25th, the GCMC Community Outreach Committee held its second Community Health Expo. The event focused on health education through fun, interactive stations.

Highlights included a popular kids' "germ hunt" by Acute Nursing and a "Walking Awareness" nutrition challenge. We also provided important assistance to community members completing living wills and durable power of attorney forms. We were pleased to have representatives from HaysMed and Senior Life Solutions join us to share



their expertise.

The morning wrapped up on a flavorful note with a community lunch. CEO Conner Fiscarelli took over grilling duties for the crowd, serving up hot dogs complemented by a variety of sides and refreshments prepared by the GCMC Dietary department.

GCMC thanks the departments and community members who made this day of health and connection a success. We appreciate our dedicated staff and look forward to seeing everyone at our next event!

News Update



HaysMed, Gove County Medical Center Move Forward with Official Partnership

HaysMed and Gove County Medical Center (GCMC) officially launched their strategic partnership on April 1, 2026, marking a significant milestone for rural healthcare in northwest Kansas. Under this new affiliation, GCMC will benefit from HaysMed's extensive operational support and specialized resources while maintaining its own name, local leadership, and community-elected board.

The immediate priorities of the partnership include aligning electronic health record systems and expanding access to visiting specialists in Quinter. Both organizations emphasized that this collaboration is designed to enhance local care rather than replace it, ensuring that patients continue to receive the same personal, high-quality treatment they expect.

By combining GCMC's community roots with HaysMed's resources, this partnership ensures sustainable, expanded care for Gove County while preserving its essential, personal touch.



Subscribe to Our Newsletter

Stay connected by subscribing to our newsletter. Send an email to wrichard@gcmc.org.

VISION

It starts with approach.

Our vision is to act with unity in serving one common purpose: To make a difference. We show we care with every action in each interaction.

VALUE STATEMENT

The values guiding Gove County Medical Center's mission and vision express our commitment to all those who live in the communities we serve.

Dedication to individual attention and superb care drive every interaction we have with our patients, our neighbors, and our fellow caregivers.

We are here to make a difference.

MISSION

Enhancing lives through person-centered care. Providing the right care, at the right time, in the right setting -close to home.

VALUES

- + Collaboration
- + Unity
- + Respect
- + Community
- + Excellence

Committed to Others. Always.

SIX STRATEGIC PRIORITIES

- + Providing a person-centered experience
- + Care you can trust
- + Be the difference in our communities
- + Be a great place to work
- + Today's success for tomorrow's future
- + Invest in our leaders



Gove County Medical Center's dedication to individual attention and superb care drive every interaction we have with our patients, our neighbors, and our fellow caregivers.

We are here to make a difference.

GCMC Board of Trustees

GCMC's Board of Trustees is a leadership team that is comprised of a diverse group of individuals passionate about providing access to healthcare regardless of the challenges that come with rural hospitals.



Terry Ostmeyer
Chairperson



Dave Polifka
Vice-Chairperson



Greg Beougher
Treasurer



Deana Zerr
Secretary



Larry Manhart
Member



Awareness Month

May is Mental Health Awareness Month: More Good Days, Together

At Gove County Medical Center, we know that true health involves more than just physical check-ups and screenings—it's about the strength and well-being of the whole person. This May, we join the national movement for Mental Health Awareness Month under the theme "More Good Days, Together."

In our busy lives, we often feel pressured to be "on" 24/7. However, this year's theme reminds us that a "good day" doesn't have to mean perfect happiness or peak productivity. A good day might simply mean feeling supported, finding a moment of calm during a hectic shift, or having the energy to connect with a neighbor. Mental health is a journey, and every small step toward resilience is a win.

Connection is Protection

One of the greatest strengths of rural healthcare is the sense of family. We don't just treat patients; we care for our friends and neighbors. Science shows that social connection is one of the most powerful tools we have for mental wellness. By checking in on one another and being open about our struggles, we build a community where no one has to carry their "not-so-good" days alone.

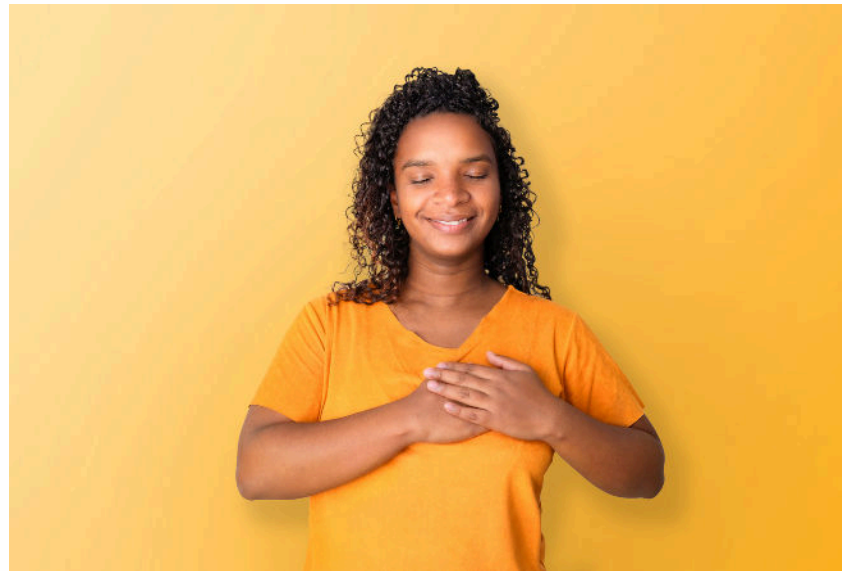
Caring for the Whole You

Mental wellness is deeply connected to how we treat our bodies. As the Kansas weather warms up, we encourage you to find "more good days" by:

- **Prioritizing Sleep:** Rest is the foundation of mental clarity.
- **Getting Outside:** A few minutes of fresh air and sunshine can significantly boost your mood.

resilience that helps us navigate life's inevitable challenges. Mental health isn't about being "okay" all the time; it's about having the tools and the support system to bounce back when things get difficult. Taking care of your mind is one of the most selfless things you can do, as it allows you to show up more fully for your family, your coworkers, and your community.

As we look toward the future, we are dedicated to fostering an environment where mental



- **Checking Your "Dashboard":** Mental Health America offers free, confidential screenings at www.mhascreening.org. It's a simple way to check in on your own well-being from the privacy of your home.

By focusing on these small, daily actions, we build a foundation of

wellness is prioritized right alongside physical health, ensuring a stronger, healthier future for all of us.

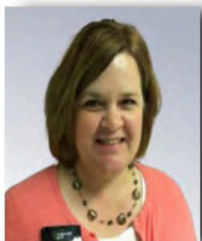
GCMC is committed to focusing on the whole person. We are proud to serve a community that looks out for one another, ensuring that we all have more good days, together.

Specialty Clinic and Services

Gove County Medical Center's specialty clinic reimagines rural healthcare by bringing advanced medical services closer to home. Through a coordinated network of visiting specialists and on-site care teams, patients can access expert treatment without the burden of extensive travel. Specialty care now includes **urology services**, along with other consultative specialties. By combining hometown compassion with expanded specialty access, Gove County Medical Center ensures timely, personalized care and demonstrates that high-quality specialty healthcare can thrive in a rural community.

MAY 2026

WEEK 1	WEEK 2	WEEK 3	WEEK 4
<p>5/4 General Surgery (Kelly Gabel, DO)</p> <p>5/5 Mammogram</p> <p>5/6 Holistic Pain Mgmt. (Brad Wertz, APRN)</p> <p>5/7 Diabetic Clinic Surgery (Charles Schultz, MD)</p>	<p>5/15 Holistic Pain Mgmt. (Regina Taylor, PA)</p>	<p>5/18 General Surgery (Kelly Gabel, DO)</p> <p>5/20 Holistic Pain Mgmt. (Brad Wertz, APRN)</p>	<p>5/27 Holistic Pain Mgmt. (Regina Taylor, PA)</p> <p>5/29 Podiatry (Robert Hinze, DPM)</p>



Janette Burbach
Dietitian



Kelly Gabel, DO
Surgery



Michael Hagley, MD
Cardiology



Robert Hinze, DPM
Podiatry



Regina Taylor, PA
Holistic Pain Mgmt.



Brad Wertz, APRN
Holistic Pain Mgmt.

HaysMed specialty care services available by calling 855-429-7633.



Srinivas Samavedi, MD
Urology



Charles Schultz, MD
Surgery



For more information

785-754-3341
520 W. 5th
Quinter, KS 67752



GOVE COUNTY 
MEDICAL CENTER A HAYSMED PARTNER



National Hospital Week: Because Healing Happens Here

From May 10th through May 16th, we join hospitals across the country in celebrating National Hospital Week. This year's theme, "Healing Happens Here," is a powerful reminder that while medicine is about science, healing is about people.

At Gove County Medical Center, "here" means more than just a building. It means the hallways where neighbors care for neighbors, the rooms where families receive life-changing news, and the community that supports us every step of the way.

More Than Just a Building

Hospital Week is a time to shine a light on the incredible team that keeps GCMC running 24/7. While you often see our doctors and nurses at the bedside, healing also happens because of our dedicated environmental services team keeping our facility safe, our food service professionals nourishing our patients, and our administrative staff ensuring that the business of care runs smoothly.

This week is about every person who walks through our doors with a mission to improve the lives of those in Gove County.

A New Chapter of Healing

This year's celebration feels especially significant as we move forward with our strategic partnership with HaysMed. By reimagining what rural healthcare looks like, we are ensuring that high-quality, specialized healing continues to happen right here in our community for generations to come.

A Century of Community Trust

The tradition of celebrating our hospitals isn't new; in fact, it dates back over a century. National Hospital Week began as "National Hospital Day" in 1921. It was established in the wake of the 1918 Spanish Flu pandemic—a time, much like our recent history, when rebuilding public trust and highlighting the vital role of local medical facilities was essential.

The event was originally set for May 12th to honor the birthday of Florence Nightingale, the founder of modern nursing, whose revolutionary work in hygiene and patient care forever changed how "healing happens" in a hospital setting.

By 1953, the celebration expanded from a single day to a full week, giving hospitals more time to connect with their communities and showcase the technological and clinical advances that save lives every day. Today, as we celebrate in 2026, we carry that same torch. We aren't just celebrating a building; we are celebrating a 105-year legacy of being a sanctuary for the sick and a pillar of strength for the healthy.

While medical technology has advanced from 1921, our mission remains the same: being there for our neighbors. Through "Rural Health Reimagined," we stay focused on the whole person, ensuring our community has more good days, together. "Committed to Others. Always."

February QAPI: Departmental Performance Improvement Updates

Ongoing performance improvement work across departments was highlighted at the April QAPI meeting (for March reporting), reflecting our continued commitment to **Care You Can Trust**. Several projects focused on strengthening consistency, improving processes, and achieving measurable outcomes across the organization, with an emphasis on sustainability and accountability.

Quality (All Departments) – Focused on improving consistency in Performance Improvement (PI) work across all departments. Monthly check-ins with Department Managers will support clearer goal-setting, benchmarking, and timelines. Additional focus is being placed on defining what success looks like, how progress is measured, and when projects can be considered complete—helping ensure improvements are both measurable and sustained over time.

Risk – Efforts are underway to improve timeliness and accountability in the incident review process. Work includes stronger collaboration with Department Managers to ensure follow-up is completed and documented appropriately. There is an increased emphasis on completing peer reviews within 14 days of assignment when possible, with the goal of identifying issues earlier and improving consistency in review practices.

Quality Corner

Compliance – Successfully achieved **100% compliance** with providing and documenting discharge instructions for surgical patients recovering on the acute floor. This was sustained over a 3-month audit period with no deficiencies identified. KDHE follow-up is now complete with successful outcomes. While routine audits will be discontinued, periodic spot audits may continue to ensure ongoing compliance and maintain gains.

Dietary – Addressing increased food waste and staff access challenges following the transition to cash/card-only purchases. The department is exploring pre-paid employee account options through Khamu and working with leadership toward implementation. This approach aims to improve convenience for

staff while reducing unnecessary waste. The project is currently on track.

Respiratory Therapy – Completed a project to reorganize the ER respiratory supply cabinet to improve efficiency and accessibility. A new compliant acrylic divider system and updated labeling were installed, resulting in a more organized workspace, easier access to supplies, and positive feedback from nursing staff.

These projects reflect ongoing efforts to strengthen processes, improve accountability, and enhance both patient care and staff experience across the organization, while ensuring improvements are practical and sustainable in daily operations.



◀ GCMC Providers ▶

We strive to be your preferred medical provider for your primary and preventative healthcare needs. Our team of providers offers a full line of services, including obstetrics to meet the needs of your family. We pride ourselves on making a difference by providing personalized, professional, and quality healthcare.



Dr. Michael Machen



Dr. Doug Gruenbacher



Dr. Shelly Gruenbacher



Dr. Anna Rempel



Dr. Scott Rempel



Jamie Mense, APRN



Coffee

and

CONVERSATION

With Conner Fiscarelli, CEO

1st Tuesday Every Month - 8:30am-9:00am

May 5th

June 2nd

July 7th

Aug 4th

Sept. 1st

Oct. 6th

Nov. 3rd

Dec. 1st



GCMC Conference Room
EMPLOYEES ONLY

◀ Calendar of Events ▶

- May 5th: Coffee and Conversations 8:30am
Operations Team Meeting 1pm
- May 12th: Department Managers Meeting 1pm
Charge Nurse Meeting 3pm
All Nurse Staffing Meeting 4pm
- May 13th: New Hire Orientation 8am
OB Quality Meeting 8am
- May 14th: Policy Meeting 10am
- May 19th: Operations Team Meeting 1pm
- May 21st: When Everyone Leads Training 9am
When Everyone Leads Training 10am
- May 22nd: BOT Meeting 8am
- May 27th: Employee Engagement Skills Day 11am
- May 28th: Medical Staff Meeting 7:30am
Policy Meeting 10am

MAY BIRTHDAYS

Brianna Miller	5-1
Aminda Brunner	5-3
Conner Fiscarelli	5-4
Trish Clark	5-6
Julie Litfin	5-16
Audrey Hawthorne	5-17
Emily Ochs	5-18
Hannah Borger	5-19
Carol Zahn	5-20
Renee Meiar	5-21
Dustri Brown	5-22
Carrie Ringer	5-22
Tammy Marshall	5-25
Shelly Dinkel	5-26
Rene' Johnson	5-26

MAY ANNIVERSARIES

20 Years
Amber Yingling

10 Years
Shayla Stuenkel

8 Years
Tiffany Ochs

6 Years
Alex Hargitt
Aubrey Werth

2 Years
Breann Powers

1 Year
Ella Prosser

EMPLOYMENT OPPORTUNITIES

Nursing Administration

Level IV Trauma & Emergency Preparedness
Coordinator - FT

Acute Care

RN - FT/PRN Days/Nights
Charge Nurse - FT Days/Nights

Lab

Lab Supervisor - FT
Medical Technologist - FT
Medical Lab Technician - FT/PRN

Respiratory Therapy

Respiratory Therapist - FT or PT

Surgical Services

Surgical Services RN Circulator - PRN

Bluestem Clinic

Licensed Clinical Social Worker -FT
(\$10,000 Sign-on Bonus)

Early Learning Center

Lead Teacher I - FT

Radiology

Radiologic & Ultrasound Technologist - FT
Radiologic Technologist - PRN

Environmental Services

EVS Technician - FT



WHY YOU SHOULD CONSIDER WORKING AT GOVE COUNTY MEDICAL CENTER

We recognize that our employees are our greatest asset; therefore we are committed to providing a comprehensive and competitive benefit package to meet the needs of our diverse workforce.

Gove County Medical Center seeks caring and dedicated individuals with a passion for delivering superior healthcare services to our patients. Each of our employees makes a difference in people's lives every single day. Our staff is dedicated to serving the community by providing high-quality, friendly healthcare services.



WELCOME TO
**THE
TEAM**

Jalyn Sabatka

Radiologic Technologist

Please join us in welcoming Jalyn Sabatka, the newest member of our team! A current Rad Tech student finishing her clinicals, Jalyn joins us with years of experience from Prairie Senior and FHSU. She graduates this May and was drawn to the "second family" feel of GCMC. Jalyn is eager to build connections with her colleagues while serving our patients with compassion. We are so happy to have her on board. Welcome, Jalyn!