

Newsletter

ISSUE | 6 | JUNE 2025



Calendar of Events

Hospital Week

Specialty Clinics

Quality Corner

Community Outreach

Gove County Medical Center

Welcome to the Pulse Newsletter. Here you will find the latest news from the hospital including opportunities and trends.

Gove County Medical Center's dedication to individual attention and superb care drive every interaction we have with our patients, our neighbors, and our fellow caregivers.

We are here to make a difference.



Health News

The latest in news for
healthcare



Employment Opportunities

Make sure to see all the
great job opportunities

The Pulse

Mission, Vision, Values

VISION

It starts with approach.

Our vision is to act with unity in serving one common purpose: To make a difference. We show we care with every action in each interaction.

VALUE STATEMENT

The values guiding Gove County Medical Center's mission and vision express our commitment to all those who live in the communities we serve.

Dedication to individual attention and superb care drive every interaction we have with our patients, our neighbors, and our fellow caregivers.

We are here to make a difference.

MISSION

Enhancing lives through person-centered care. Providing the right care, at the right time, in the right setting - close to home.

VALUES

- + Collaboration
- + Unity
- + Respect
- + Community
- + Excellence

Committed to Others. Always.

SIX STRATEGIC PRIORITIES

- + Providing a person-centered experience
- + Care you can trust
- + Be the difference in our communities
- + Be a great place to work
- + Today's success for tomorrow's future
- + Invest in our leaders

The Pulse

Events



**Gove County
Medical Center**
Committed to Others. Always.



June

Calendar of Events

3rd	<i>Operations Team Mtg. 1pm</i>
4th	<i>Marketing Com. Mtg. 12pm</i>
5th	<i>Coffee & Convo 8:30am</i>
10th	<i>DM Meeting 1pm</i> <i>Charge Nurse Mtg. 3pm</i> <i>Nursing All Staff Mtg. 4pm</i>
11th	<i>Orientation 8am</i> <i>Body Mechanics 11am</i> <i>Active Threat 12:15pm</i>
12th	<i>Policy Mtg. 10am</i>
17th	<i>CPR 8am & 1pm</i> <i>Operations Team Mtg. 1pm</i>
24th	<i>QEC Day 8am</i>
26th	<i>Med Staff Mtg. 7:30am</i> <i>Policy Mtg. 10am</i>
27th	<i>BOT Mtg. 8am</i>

The Pulse

Our Providers



Michael E. Machen, MD



Douglas J. Gruenbacher, MD



Shelly L. Gruenbacher, MD



Anna Rempel, MD



Scott Rempel, MD



Jamie Mense, APRN



Cardiology
Dr. Wagle



Podiatry
Dr. Hinze



Cardiology
Dr. Hagley



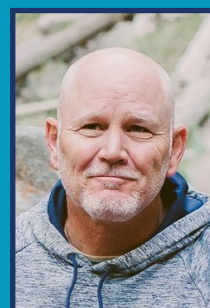
General Surgery
Dr. Schultz



General Surgery
Dr. Gabel



Diabetic/Dietitian/Nutrition
Janette Burbach, MS RD CDE



Anesthesiology
Mitch Bailey, CRNA



Anesthesiology
Melissa Albers, CRNA

The
nurse
Specialty Clinics



**Gove County
Medical Center**
Committed to Others. Always.

Specialty Clinics

YOUR HEALTH IS OUR PRIORITY

This Month's Clinics

- Surgical Clinic Dr. Gabel June 2nd
- Mammograms June 3rd
- Diabetic Clinic June 4th
- Surgical Clinic Dr. Schultz June 5th
- Holistic Pain Management June 6th
- Holistic Pain Management June 9th
- Surgical Clinic Dr. Gabel June 16th
- Cardiology Clinic Dr. Hagley June 16th
- Cardiology Clinic Dr. Wagle June 17th
- Podiatry Clinic Dr. Hinze June 19th
- Holistic Pain Management June 20th
- Holistic Pain Management June 23rd

**DOCTORS
AVAILABLE**



CALL US NOW!
785-754-5154
WWW.GCMC.ORG

COMMITTED TO OTHERS. ALWAYS.

Enhancing lives through person-centered care.
Providing the right care, at the right time, in the right setting -
Close to home.

The Pulse Hospital Week

Hospital Week 2025: A Celebration of Teamwork, Talent, and a Whole Lot of Fun!

Hospital Week 2025 at Gove County Medical Center was one for the books! It was a week full of energy, appreciation, friendly competition, and of course, delicious food. A big thank-you goes out to the amazing Planning Committee who made it all happen — with a special shout out to Megan Heier for her outstanding efforts. And thank you to our Dietary team for keeping us cool and satisfied with treats like the ice cream bar and more.

The week kicked off with the much-anticipated Opening Ceremony for the GCMC Office Olympics. Each department showed off their creative spirit with custom-made flags, and our symbolic “torch” led the way into a week of exciting events.

Throughout the week, cooler bags stuffed with goodies were distributed to employees as tokens of appreciation. We also took time to recognize excellence at GCMC during our DAISY, Sunflower, and Maple Awards Ceremony, honoring outstanding contributions from our team. (Nominees will be announced soon—stay tuned!)

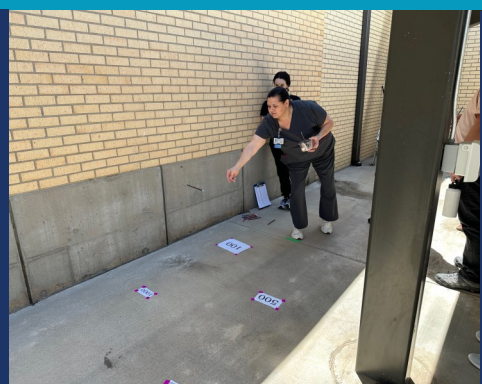
Office Olympics Highlights:

- Monday: Opening Ceremony and the Pencil Toss Javelin
- Tuesday: Rubber Band Archery
- Wednesday: Feast of Champions BBQ and Paper Airplane Distance Throw
- Thursday: Awards Ceremony and Plate Discus Throw
- Friday: Wheelchair Bobsled Race and Closing Ceremony

We also emphasized safety in fun and tasty ways with themed Safety Days:

- *Don't slip, don't fall—do the Ice Cream Crawl!* (Free ice cream)
- *Safety first is the trend—mix and match your perfect parfait blend!*
- *Stay safe while you're grillin' and chillin'*
- *Use caution when you lift—and enjoy a sweet gift!* (Free cinnamon rolls)

Hospital Week gave us the opportunity to reflect on and celebrate the incredible dedication, compassion, and teamwork that define GCMC. It is the strength of each individual that makes our team so strong. Cheers to Hospital Week 2025—and here's to another amazing year together!



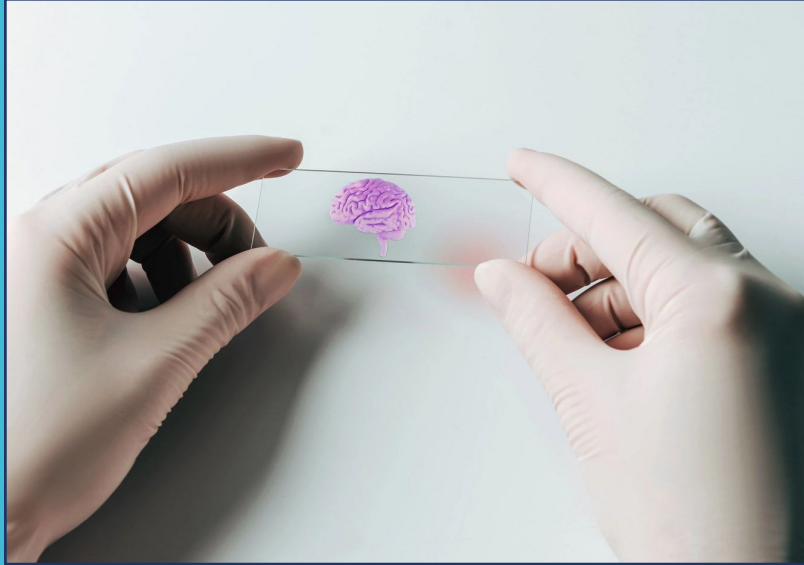
New FDA-Cleared Blood Test For Alzheimer's Disease

In a landmark decision, the U.S. Food and Drug Administration (FDA) has approved the first-ever blood test designed to help diagnose Alzheimer's disease. The test, called Lumipulse, was developed by Fujirebio Diagnostics and is considered a major advancement in the fight against the most common form of dementia.

Alzheimer's disease has historically been difficult to diagnose with certainty outside of expensive or invasive procedures like PET scans or lumbar punctures (spinal taps), which detect amyloid plaques in the brain — a key marker of the disease. The Lumipulse test offers a simpler, less invasive alternative by using a blood sample to measure the ratio of two proteins: pTau217 and β -amyloid 1-42. The test calculates this ratio to assess whether amyloid plaques are likely present in the brain.

The FDA has approved the test for adults aged 55 and older who are experiencing cognitive symptoms, such as memory loss, confusion, or behavioral changes, and are being evaluated for Alzheimer's disease. However, the test is not intended for general screening or for people without symptoms. A positive test result is not a definitive diagnosis but an indicator that further testing, such as brain imaging or a spinal tap, may be necessary.

Experts emphasize that while this is not a standalone diagnostic tool, it could significantly streamline the diagnostic process. Clinicians may use it early in the evaluation to rule out Alzheimer's or to determine if more advanced tests are needed. According to researchers, Lumipulse is among the most accurate blood-based biomarkers developed so far, showing strong performance in clinical trials.



This approval arrives at a critical time: more than 6 million Americans are living with Alzheimer's today, and that number is expected to nearly double by 2050. Early diagnosis is seen as key to managing the disease, especially now that disease-modifying treatments such as Leqembi (by Biogen and Eisai) and Kisunla (by Eli Lilly) are entering the market. These drugs target amyloid buildup and are most effective in the early stages of the disease.

The availability of a blood test could also help improve access and equity in diagnosis, especially for people who live far from specialized imaging centers or cannot afford costly procedures. While the test is not perfect — and cannot replace more definitive scans in all cases — it's a major step forward in both clinical care and patient experience.

Overall, the FDA's approval of the Lumipulse test marks a new chapter in Alzheimer's diagnosis and care, offering patients and doctors a powerful new tool to detect the disease earlier, more affordably, and with less discomfort.

The GCMC Community Outreach Corner

The Gove County Medical Center (GCMC) Community Outreach Committee continues to lead by example, bringing care, compassion, and service beyond the walls of the hospital and into the heart of the community. During the month of May, two major outreach efforts highlighted the spirit of giving and resilience that defines our county.

Community Baby Shower: Giving Families a Head Start

On Wednesday, May 28, GCMC hosted a drive-thru Community Baby Shower on the south side of Bluestem Clinic. This event invited the public to donate new or gently used baby items—especially diapers—to help support families with young children in our community. Donations collected will be distributed to local families in need, offering much-needed relief for parents preparing to welcome or care for a new baby.

Adding to the event were the children from the Gove County Early Learning Center, an extension of GCMC, who ran a cheerful Lemonade Stand. All proceeds from the stand will go toward purchasing books, toys, and educational supplies to enhance their classroom experience. Not only did this give the children an opportunity to participate in giving back, but it also demonstrated the importance of community involvement from an early age.

While the amount of donations are still being compiled, the generosity is unmistakable. Events like this one remind us of the impact we can make when we come together to support one another.



Tornado Relief Efforts in Grinnell

Earlier in the month, tragedy struck the town of Grinnell, Kansas, when a tornado caused significant damage and disruption. GCMC quickly mobilized to provide relief and support to our neighbors in need. Under the leadership of GCMC CEO Conner Fiscarelli, the hospital organized daily volunteer groups to assist in cleanup efforts, including debris removal and property recovery.

In addition to the hands-on help, GCMC also donated 300 meals to residents and responders—ensuring nourishment for those working tirelessly to rebuild their homes and lives. This initiative reinforced the hospital's mission to serve not only with medical care but with compassion, presence, and meaningful action.



The GCMC Community Outreach Corner



Looking Ahead: Day of Caring

The GCMC Community Outreach Committee is already looking to the future. In June, the team will lead a “Day of Caring” project, focused on painting house numbers on curbs across the community. This simple but important act is designed to improve mail delivery accuracy and emergency response times, helping first responders and postal carriers identify homes more quickly and efficiently.

Whether it’s a community outreach or a response to unexpected disaster, GCMC remains steadfast in its commitment to serve. The Community Outreach Committee thanks everyone who has participated, volunteered, or donated—and encourages all to continue finding ways to give back. Together, we make a stronger, safer, and more caring community.



COMMUNITY

COMMUNITY

The Pulse Community Service Month



Give Back and Make a Difference in Our Communities

It may not be an official month that is recognized nationally in June, but GCMC is calling this month Community Service Month.

Community service, the act of volunteering time and skills to benefit others, is a cornerstone of thriving societies. From cleaning up local parks to tutoring underprivileged children, these efforts create ripple effects that strengthen communities and enrich lives. Here's why community service matters.

BUILDING STRONGER COMMUNITIES

Community service fosters connection and collaboration. When individuals come together to address shared challenges—like organizing food drives or revitalizing public spaces—they build trust and solidarity. These bonds create resilient neighborhoods where people feel supported and valued.

ADDRESSING LOCAL NEEDS

Many communities face issues like poverty, environmental degradation, or lack of access to education. Community service provides direct, hands-on solutions. Volunteers can fill gaps that government or private sectors may overlook, such as delivering meals to seniors or planting trees to combat urban heat. These efforts have immediate, tangible impacts, improving quality of life for those in need.

PERSONAL GROWTH AND DEVELOPMENT

Volunteering isn't just about giving—it's also about growing. Participants develop skills like leadership, communication, and problem-solving. For young people, community service can spark career interests or build resumes. Adults often find renewed purpose or perspective.

ENHANCING MENTAL AND PHYSICAL HEALTH

Serving others can boost well-being. Studies,

including a 2022 report from the Mayo Clinic, show that volunteering reduces stress, combats depression, and even lowers blood pressure. The sense of purpose and connection gained from helping others fosters happiness and longevity. Whether it's a one-time event or a weekly commitment, the act of giving back feels good.

INSPIRING OTHERS

Community service is contagious. When one person volunteers, they often inspire friends, family, or colleagues to join in. This chain reaction amplifies impact, turning individual efforts into collective movements. Social media posts about volunteer experiences, for instance, can motivate others to get involved, creating a culture of giving.



Community service is more than a noble act—it's a powerful force for change. It strengthens bonds, meets urgent needs, and transforms both volunteers and those they serve. By dedicating time to help others, GCMC wants to contribute to a cycle of generosity and growth that uplifts everyone. So, whether it's an hour or more, every moment spent in service makes a difference and WE want to be the difference in our communities.

The Pulse

Coffee and Conversation

Announcing: Monthly Staff Event: Coffee and Conversation with Conner ☕👤

We are excited to share a new opportunity just for our staff!

These events will happen **every 1st Thursday of Every Month**, from **8:30 AM to 9:00 AM** in the **Conference Room**, where Conner will be hosting an informal “**Coffee and Conversation**” session. This is a relaxed time for any staff members who’d like to drop in, ask questions, or simply chat about GCMC and what’s going on around here.



Coffee and CONVERSATION

With Conner Fiscarelli, CEO

1st Thursday Every Month - 8:30am-9:00am



June 5th
July 3rd
Aug. 7th

Sept. 4th
Oct. 2nd
Nov. 6th
Dec. 4th

GCMC Conference Room
EMPLOYEES ONLY

Oh—and **did we mention there will be free donuts?** 🍩

This event is **for staff only** (not open to the public), and it’s all about giving you the chance to connect directly with Conner in a casual setting—something our busy schedules don’t always allow.

Coffee and Conversation will be only be promoted internally.

We look forward to seeing you there—**coffee and donuts are on us!**





IN SYMPATHY

We would like to extend our deepest sympathy to our employee, Tiff Ochs on the loss of her grandmother, Janice Antholz. We pray you find peace during this difficult time.

June Birthdays

Jadelyn Betz	6-1
Jenna Harvey	6-8
Wanda Russell	6-9
Danielle Flinn	6-10
Lynn Heinrich	6-11
Randy Wittman	6-15
Brianna Bishop	6-18
Sheryl Bird	6-21
Doreen Wente	6-21
Megan Heier	6-29
Emma Zerr	6-29

June Anniversaries

<u>27 YEARS</u>
Wendy Schmidt
<u>19 YEARS</u>
Abby Weber
<u>16 YEARS</u>
Jamie Ruf
<u>7 YEARS</u>
Sydney Jacques
<u>5 YEARS</u>
Hannah King
Tara Perez
<u>3 YEARS</u>
Aminda Brunner
Emma Haase
Raegan Mattke
<u>1 YEAR</u>
Brianna Bishop
Aliah Miller

EMPLOYMENT OPPORTUNITIES

ACUTE CARE

RN - FT Nights /PRN Days/Nights
Charge Nurse – FT Nights

LAB

Medical Lab Technician– PRN

EARLY LEARNING CENTER

Lead Teacher I - FT & PRN

ENVIRONMENTAL SERVICES

EVS Technician - FT

PHYSICAL THERAPY

Occupational Therapist - FT

RESPIRATORY THERAPY

Respiratory Therapist - PT

EMPLOYEE CONGRATULATIONS!

Blair Rose Harvey



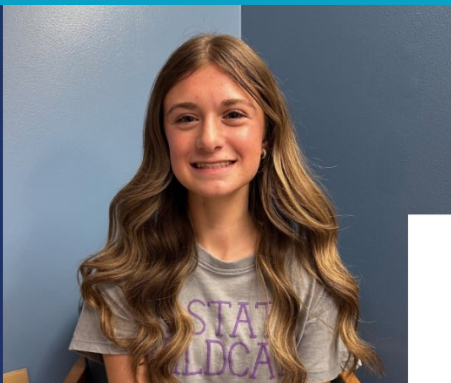
**May 2, 2025
at 11:57 pm**

**6 lbs 4.8 oz
19 inches**

Proud Parents: Grant & Jenna

The Pulse

New Employees



WELCOME TO
**THE
TEAM**

Ella Prosser

Teacher's Aide

Please help us in welcoming Ella Prosser to our team at GCMC. Ella formerly worked at Dairy Queen for the last year. She is currently a Junior in High School and lives south of Gove. Ella said that when she graduates high school she wants to study to be a teacher. When asked why she wanted to come to Gove County Medical Center, she stated that she has always wanted to work at a daycare and this was an opportunity to do so. Welcome to GCMC, Ella!

*Please Welcome
Your New
Co-workers!*



**Gove County
Medical Center**
Committed to Others. Always.



WELCOME TO
**THE
TEAM**

Katie Chrisler

Medical Lab Technician

Please join us in welcoming Katie Chrisler to our team at GCMC! Katie formerly worked at GCMC as the Lab Director. Katie currently works from home for a lab software company. She decided to rejoin the lab team at GCMC to keep up on her lab skills and help with patient care. Welcome back!

The Pulse

New Employees



WELCOME TO
**THE
TEAM**



**Gove County
Medical Center**
Committed to Others. Always.

Adrienne Hrabe

Acute Patient Care Technician

Please join us in welcoming Adrienne Hrabe to our team at GCMC! Adrienne will be working PRN just for the summer as part of the Next Gen Internship program. She also works at Walmart in Colby and lives in Grainfield. Adrienne just recently graduated from high school and plans to attend Kansas University to study Pre-Med and minor in Spanish. Her career goal is to be an OBGYN.

*Please Welcome
Your New
Co-workers!*



WELCOME TO
**THE
TEAM**

Britney Kidd

Cook

Please join us in welcoming Britney Kidd to our team at GCMC! Britney formerly worked at KDOT as an Equipment Operator in Grainfield, where she lives. When asked why she came to GCMC, she stated that for her family, she was needing a change. Britney said that she is looking forward to meeting new people. Welcome to GCMC, Britney!

Quality in Action: April 2025 Department Spotlight

At GCMC, our commitment to continuous improvement shines through in the innovative projects departments are leading: Here's a look at the quality initiatives reported at the April QA Meeting:

Discharge Planning

Efforts are underway to ensure all acute and CSB patients—excluding OB—have follow-up appointments scheduled prior to discharge. This enhances continuity of care and reduces readmission risk.

Emergency Preparedness

The department is strengthening its decontamination team by identifying additional staff and refining protocols. Customized flip books are being developed to support rapid response across departments.

Human Resources

HR is revamping the staff evaluation process, implementing structured check-ins at 30, 60, 90 days, and 6 months to support employee development and retention.

Infection Prevention

Focused on the correct collection of urine specimens to improve diagnostic accuracy and reduce unnecessary treatments.

Supply Chain

Partnering with departments to reduce expired supply items, promoting safer patient care and resource efficiency.

Acute Nursing & Emergency Department

Tracking and improving compliance with the sepsis treatment bundle to enhance patient outcomes.

Pharmacy

Initiating a multidisciplinary committee to improve the medication reconciliation process, aiming to prevent adverse drug events and ensure accurate patient medication lists.

Bluestem Clinic

Addressing issues related to failed faxes that impact referral and order delivery—vital steps to maintaining smooth patient transitions and communication.

Environmental Services

Improving the frequency and thoroughness of dusting high-surface areas to enhance infection prevention and hospital cleanliness.

“Care You Can Trust” starts with quality improvement at every level.



*You Can't
Fake Quality*



The Pulse

Board of Trustees

Quote of the Month

"If I cannot do great things, I can do small things in a great way."

Martin Luther King, Jr.

MISSION STATEMENT

Enhancing lives through person-centered care. Providing the right care, at the right time, in the right setting -close to home.

VISION STATEMENT

It starts with approach. Our vision is to act with unity in serving one common purpose: To make a difference. We show we care with every action in each interaction.

VALUE STATEMENT

The values guiding Gove County Medical Center's mission and vision express our commitment to all those who live in the communities we serve.

Dedication to individual attention and superb care drive every interaction we have with our patients, our neighbors, and our fellow caregivers.

We are here to make a difference.

VALUES

Collaboration

Unity

Respect

Community

Excellence



Terry Ostmeyer
Chairperson



Dave Polifka
Vice-Chairperson



Greg Beougher
Treasurer



Deana Zerr
Secretary



Larry Manhart
Member

GCMC's Board of Trustees is a leadership team that is comprised of a diverse group of individuals passionate about providing access to healthcare regardless of the challenges that come with rural hospitals.