

Newsletter

ISSUE | 7 | JULY 2024



Calendar of Events

Employee Awards

Community Health Expo

Specialty Clinic Schedule

Health News

Gove County Medical Center

Welcome to the Pulse Newsletter. Here you will find the latest news from the hospital including opportunities and trends.

Gove County Medical Center's dedication to individual attention and superb care drive every interaction we have with our patients, our neighbors, and our fellow caregivers.

We are here to make a difference.



Health News

The latest in news for
healthcare



Employment Opportunities

Make sure to see all the
great job opportunities

The Pulse

Mission, Vision, Values

VISION

It starts with approach.

Our vision is to act with unity in serving one common purpose: To make a difference. We show we care with every action in each interaction.

VALUE STATEMENT

The values guiding Gove County Medical Center's mission and vision express our commitment to all those who live in the communities we serve.

Dedication to individual attention and superb care drive every interaction we have with our patients, our neighbors, and our fellow caregivers.

We are here to make a difference.

MISSION

Enhancing lives through person-centered care. Providing the right care, at the right time, in the right setting - close to home.

VALUES

- + Collaboration
- + Unity
- + Respect
- + Community
- + Excellence

Committed to Others. Always.

SIX STRATEGIC PRIORITIES

- + Providing a person-centered experience
- + Care you can trust
- + Be the difference in our communities
- + Be a great place to work
- + Today's success for tomorrow's future
- + Invest in our leaders

The Pulse

Events



**Gove County
Medical Center**
Committed to Others. Always.



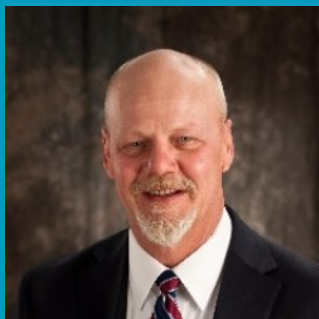
MAY

Calendar of Events

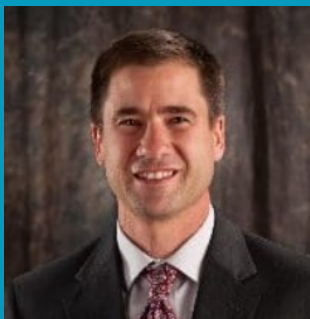
1ST	<i>PFAC Mtg. 4:30pm</i>
4TH	<i>CLOSED Independence Day</i>
9TH	<i>De-Escalation Tech. 12pm</i>
	<i>DM Meeting 1pm</i>
	<i>Charge Nurse Mtg. 3pm</i>
	<i>Nursing All Staff Mtg. 4pm</i>
11TH	<i>Policy Mtg. 10am</i>
16TH	<i>Recruit & Ret. Mtg. 12pm</i>
17TH	<i>Orientation 8am</i>
	<i>Body Mechanics 11am</i>
	<i>Active Threat 12:15pm</i>
23RD	<i>CPR 8am</i>
25TH	<i>Policy Mtg. 10am</i>
26TH	<i>BOT Mtg. 8am</i>
30TH	<i>QEC Mtg. 8am</i>

The Pulse

Our Providers



Michael E. Machen, MD



Douglas J. Gruenbacher, MD



Shelly L. Gruenbacher, MD



Anna Rempel, MD



Scott Rempel, MD



Jamie Mense, APRN



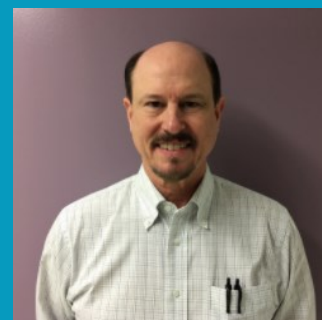
**Cardiology
Dr. Wagle**



**Podiatry
Dr. Hinze**



**Cardiology
Dr. Hagley**



**General Surgery
Dr. Schultz**



**General Surgery
Dr. Gabel**



**Diabetic/Dietitian/Nutrition
Janette Burbach, MS RD CDE**



**Orthopedics
Dr. Harbin**



**Anesthesiology
Melissa Albers, CRNA**

The
nurse
Specialty Clinics



**Gove County
Medical Center**

Committed to Others. Always.

Specialty Clinics

YOUR HEALTH

**IS OUR
PRIORITY**

This Month's Clinics

- Surgical Clinic Dr. Gabel July 1st
- Diabetic Clinic July 3rd
- Holistic Pain Management July 10th
- Holistic Pain Management June 12th
- Cardiology Clinic Dr. Wagle July 16th
- Surgical Clinic Dr. Schultz July 18th
- Surgical Clinic Dr. Gabel July 22nd
- Holistic Pain Management July 23rd
- Holistic Pain Management July 26th
- Podiatry Clinic Dr. Hinze July 30th

**DOCTORS
AVAILABLE**



CALL US NOW!

785-754-5154

WWW.GCMC.ORG

COMMITTED TO OTHERS. ALWAYS.

Enhancing lives through person-centered care.

Providing the right care, at the right time, in the right setting -

Close to home

The Pulse

Employee Recognition Awards

Employee Recognition Awards

Gove County Medical Center is committed to recognizing and rewarding employees who exhibit outstanding performance and service excellence. Please share your gratitude by nominating an employee of how they made a meaningful difference in your care, the services they provided or the outstanding traits they show as a co-worker. Nominations can be made by providers, patients, family / visitors, volunteers and GCMC employees.

The DAISY Award



Gove County Medical Center is pleased to partner with The DAISY Foundation to present The DAISY Award for Extraordinary Nurses here at our facility. The DAISY Award is an international recognition program that honors and celebrates the skillful, compassionate care nurses provide everyday.

The DAISY (Diseases Attacking the Immune System) Foundation was established by the family of J. Patrick Barnes after he died from complications of the auto-immune disease ITP in 1999. During his hospitalization, they deeply appreciated the care and compassion shown to Patrick and his entire family. When he died, they felt compelled to say "thank you" to nurses in a very public way. Please say thank you by sharing your story of how a nurse made a difference you will never forget! The DAISY Award are presented in May during Nurse's Week.

To learn more about the DAISY Foundation and the DAISY Award for Extraordinary Nurses, please visit:
<https://www.daisyfoundation.org>

The Pulse

Employee Recognition Awards



The Sunflower Award



To nominate an employee go to:
www.gcmc.org/employee-recognition-awards/

The Sunflower Award was created to recognize non-nursing clinical staff who go above and beyond in their roles at Gove County Medical Center. Sunflower Award nominees display skill, compassion, kindness, dedication and enthusiasm – exemplifying the kind of person that our patients, their families and our staff recognize as an outstanding role model.

Clinical Staff eligible for The Sunflower Award include Laboratory, Patient Care Technician, Nurse Aide, Scrub Technician, Medical Assistant, Physical Therapy, Occupational Therapy, Cardiac Rehab, Speech Therapy, Infection Prevention, Radiology, and Respiratory Therapy. The Sunflower Awards are presented in October.

The Maple Award



The Maple Award was created to recognize the outstanding individuals working behind the scenes in our support services departments who go above and beyond in their roles at GCMC. A Maple Award nominee consistently displays teamwork and excellent interactions with staff, patients and visitors.

Non-clinical Support Staff eligible for the Maple Award include Accounts Payable / Accounting, Administration (Chief Nursing Officer, Administrative Assistant, Chief Financial Officer, Chief Executive Officer), Hospital/Clinic Business Office, Emergency Preparedness, Risk Management, Quality, Lab Secretary, Physical Therapy Secretary, Dietary, Environmental Services, Hospital/Clinic Health Information, Human Resources, Information Technology, Marketing, Materials Management, Patient Registration, Maintenance, Transportation, Patient Financial Counselor, and Early Learning Center. The Maple Award is presented in October at the same time as the Sunflower Award.

The Pulse Community Health Expo



The first annual GCMC Community Health Expo was held on June 22nd at the Quinter Park.

Departments from the hospital displayed booths with health information and tied it in with fun activities.

This event was free to all community members, offering fun, food, and information. Hot dogs were also served to the public.

The Health Expo is part of the new GCMC strategic plan and mission, vision, and values. As a part of the hospital's strategic priorities, being the difference in our community is an important pillar. Community also stands as one of the hospital's five values.

GCMC hopes to see the Community Health Expo grow over the next several years. The hospital understands that the community is the most important factor in rural healthcare and giving back shows the gratitude deserved to Gove County.

Thank you to all those who attended and supported this event.



EMBRACING PATIENT-CENTERED CARE: **A STRATEGIC PRIORITY**

This is not just a slogan, but a guiding principle that we are committed to.

In June, we rolled out our hospital's new Mission, Vision, and Values. Our first strategic priority is providing a patient-centered experience. At the heart of our mission lies a commitment to delivering care that heals bodies, uplifts spirits, and fosters trust within our community.

In our unique setting of a rural critical access hospital, the concept of patient-centered care takes on a profound significance. Our patients are not just individuals seeking treatment; they are our neighbors, friends, and families. They entrust us not only with their health but also with their sense of security and well-being, forging a personal connection that makes our role in their lives even more crucial.

So, what does it mean to prioritize a patient-centered experience in our unique setting?

In our region, we are fortunate to have several nearby hospitals providing access to care for our community members. However, even with this accessibility, we recognize that each patient's journey to our hospital may present challenges. Whether it's navigating busy schedules, arranging transportation, or managing other personal commitments, we understand that our patients may face various obstacles in accessing the care they need. Therefore, it remains our priority to ensure that every individual who seeks treatment at our hospital receives the support and assistance necessary to navigate these challenges seamlessly.

Embracing a patient-centered experience means more than just providing care. It means involving our patients in their own care journey. In our close-knit community, relationships matter. As hospital staff, our role is crucial. We take the time to listen to our patients, to understand their concerns and preferences, and to involve them in decisions regarding their treatment plans. Whether it's discussing treatment options or coordinating follow-up care, we strive to empower our patients to take an active role in their health and well-being, fostering a sense of ownership and partnership in their care.

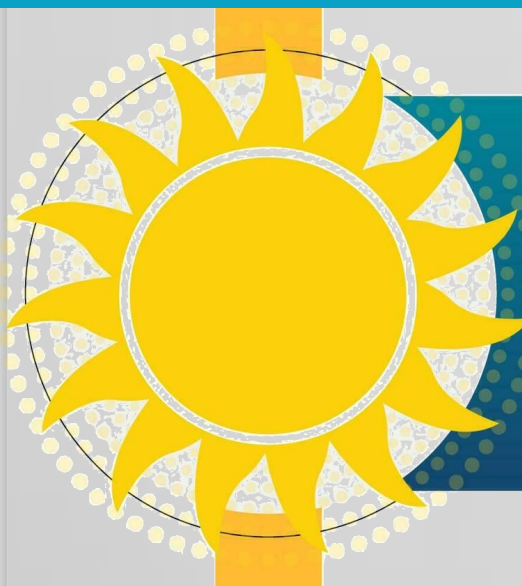
Furthermore, providing a patient-centered experience means going above and beyond to anticipate and address the unique needs of our community. From offering flexible appointment scheduling to providing transportation assistance for those in need, we constantly seek innovative ways to ensure all community members have access to the care they deserve.

In our relentless pursuit of excellence, we are committed to continuously evaluating and improving our patient-centered initiatives. As we embrace our first strategic priority, let us remember that the well-being of our patients lies at the heart of every policy, procedure, and decision.



**Gove County
Medical Center**
Committed to Others. Always.





With summer in full swing, it's the perfect time to head outdoors and enjoy the sunny weather. But are you protecting yourself from potential risks?

The goal of UV (Ultraviolet) Safety Month is to spread the word about how important it is to protect everyone's skin from the harmful effects of UV rays.

Ultraviolet (UV) radiation are invisible rays that are part of the energy that comes from the sun. Overexposure to the sun's UV rays can cause damage

to the skin and cause different types of skin cancer. It's always important to stay safe when your family is playing in the sun.

While it may seem like a sunburn is a temporary irritation, it can leave long-lasting damage to your skin. According to the Melanoma Research Foundation, "Just one blistering sunburn during childhood can double the chances of developing melanoma later in life."

5 Ways to Protect Your Skin From UV Radiation

1. Wear Sunscreen



2. Clothing



3. Shade



4. Hat and Sunglasses



4. Avoid Tanning Beds



Source chcw.org



It's Hot....Are You Subject to Heat Stoke?

Heat stroke is the most severe form of heat illness and is a life-threatening emergency. It is the result of long, extreme exposure to the sun. In this case, a person does not sweat enough to lower body temperature. The elderly, infants, persons who work outdoors, people with mental illness, obesity, poor circulation, and those on certain types of medicines or drinking alcohol are most susceptible to heat stroke. It is a condition that develops rapidly and needs immediate medical treatment.

Our bodies make a tremendous amount of internal heat and we normally cool ourselves by sweating and radiating heat through the skin. However, in certain circumstances, such as extreme heat, high humidity, or vigorous activity in the hot sun, this cooling system may begin to fail. This allows heat to build up to dangerous levels.

If a person becomes dehydrated and cannot sweat enough to cool his or her body, his or her internal temperature may rise to dangerously high levels. This causes heat stroke.

The following are the most common symptoms of heat stroke. However, each individual may experience symptoms differently. Symptoms may include:

- Headache
- Dizziness
- Disorientation, agitation, or confusion
- Sluggishness or fatigue
- Seizure
- Hot, dry skin that is flushed but not sweaty
- A high body temperature
- Loss of consciousness
- Rapid heartbeat
- Hallucinations

The symptoms of a heat stroke may resemble other medical conditions or problems. Always talk with your healthcare provider for a diagnosis.

It is important for the person to be treated immediately as heat stroke can cause permanent damage or death. There are some immediate first-aid measures you can take while waiting for help to arrive, including the following:

- Get the person to a shaded area.
- Remove clothing and gently apply cool water to the skin followed by fanning to stimulate sweating.
- Apply ice packs to the groin and armpits.
- Have the person lie down in a cool area with their feet slightly elevated.
- Cool the person rapidly however you can.

Intravenous (IV) fluids are often necessary to compensate for fluid or electrolyte loss. Bed rest is generally advised and body temperature may fluctuate abnormally for weeks after heat stroke.

There are precautions that can help protect you against the adverse effects of heat stroke. Living in a hot climate with chronic conditions means you should talk to your healthcare provider about extra precautions you can take to protect yourself against heat stroke.

Source

www.hopkinsmedicine.org



The Nurse

Employee Recognitions



EMPLOYEE RECOGNITIONS



**Gove County
Medical Center**
Committed to Others. Always.

EMPLOYEE RECOGNITIONS

We would like to recognize
the employees from
Environmental Services

Environmental Services

Left to Right:
Darwin Schuster,
Amber Hatch,
Serenity Thomas,
Amber Ladwig,
Angie Calvin

Thank you to each employee
from this department for
your dedication and service
to our patients at GCMC.
You are appreciated.

THANK YOU!



IN SYMPATHY

Our deepest sympathy, goes out to our employees Dustri Powers and Breann Powers on the loss of their grandfather and grandfather-in-law Frank Powers. We pray that their families find peace in this difficult time.

July Birthdays

Shayla Stuenkel	7-1
Becky Mader	7-5
Nadine Hargitt	7-6
Sandie Bradshaw	7-8
Michaela Depenbusch	7-8
Jerry Gallentine	7-8
Michelle Drexler	7-14
Aubrey Werth	7-14
Melinda Howard	7-19
Bill Schneider	7-20
Joyce Schneider	7-20
Amber Baxter	7-21
Desi Neff	7-23
Brandi Klein	7-24
Jamie Mense	7-29
Ellie Anderson	7-31

July Anniversaries

<u>34 YEARS</u>
Rene' Johnson
<u>33 YEARS</u>
Joyce Rohr
<u>28 YEARS</u>
Ruth Blackwill
<u>17 YEARS</u>
Tara Thornburg
<u>11 YEARS</u>
Kilee Zeman
<u>10 YEARS</u>
Sandie Bradshaw
Rache' Wente
<u>5 YEARS</u>
Kylie Ritter
<u>4 YEARS</u>
Trish Clark
<u>3 YEARS</u>
Hailey Mossman
Desi Neff
Renee Wagoner
Nicole Walt
<u>2 YEARS</u>
Liz Dilka
Denise Wittman
Randy Wittman
<u>1 YEAR</u>
Karina Lara

EMPLOYMENT OPPORTUNITIES

ACUTE CARE

RN - FT *Nights /PRN Days/Nights*
Charge Nurse- *FT Nights*

LAB

Lab Manager - *FT*

EARLY LEARNING CENTER

Lead Teacher I - *FT & PRN*

PUBLIC TRANSPORTATION

Transportation Van Driver - *PRN*

BUSINESS OFFICE

Business Office Clerk - *FT*

DIETARY

Cook - *FT*

RESPIRATORY THERAPY

Respiratory Therapy Manager - *FT*
Respiratory Therapist- *FT*

CLINIC

Clinic Registered Nurse (RN) - *FT*
Clinic Licensed Practical Nurse (LPN) - *FT*

HEALTH INFORMATION

Medical Records Clerk - *FT*

OPERATING ROOM

OR Scrub Tech - *PRN*

WELCOME YOUR NEW CO-WORKERS



WELCOME TO
**THE
TEAM**

Brianna Bishop

Clinic Non-Certified Medical Coder

Please help us in welcoming Brianna Bishop to our team at GCMC. Brianna is from Wisconsin and will be working remotely from there. She previously worked as an OR Nurse for three and a half years. She is married with two kids and plenty of pets. When asked why she wanted to work remote for GCMC she responded that although she enjoyed nursing she was ready for something else and has a background in coding so it was a perfect match.



WELCOME TO
**THE
TEAM**

Aliah Miller

Lead Teacher

Please help us in welcoming Aliah Miller to our team at GCMC. Aliah previously worked at Ray's Pharmacy in Quinter. She is excited about being a teacher at the daycare because she knows the staff and loves watching children grow and learn. She is expecting a baby in October and is looking forward to learning some tips and tricks from the other teachers there.

The Pulse

Board of Trustees

Quote of the Month

"Any fool can be happy. It takes a man with real heart to make beauty out of the stuff that makes us weep."

Clive Barker

MISSION STATEMENT

Enhancing lives through person-centered care. Providing the right care, at the right time, in the right setting -close to home.

VISION STATEMENT

It starts with approach. Our vision is to act with unity in serving one common purpose: To make a difference. We show we care with every action in each interaction.

VALUE STATEMENT

The values guiding Gove County Medical Center's mission and vision express our commitment to all those who live in the communities we serve.

Dedication to individual attention and superb care drive every interaction we have with our patients, our neighbors, and our fellow caregivers.

We are here to make a difference.

VALUES

Collaboration

Unity

Respect

Community

Excellence



Dave Polifka
Chairperson



Terry Ostmeyer
Vice-Chairperson



Cheryl Remington
Treasurer



Deana Zerr
Secretary



Greg Beougher
Member

GCMC's Board of Trustees is a leadership team that is comprised of a diverse group of individuals passionate about providing access to healthcare regardless of the challenges that come with rural hospitals.